

ROYAL FORKLIFT (JIANGSU) CO., LTD.

www.ryforklift.com

Add / No. 58, JIGUANG ROAD, QIANDENG, SUZHOU, JIANGSU, CHINA 215341
 TEL / (86) 512-36687077 FAX / (86) 512-36687058 Email / info@ryforklift.com

*All Rights Reserved by RY Forklift.



**Heavy Duty
Forklift Truck**

5.0-10.0ton





Comfort & Ergonomics

- The Right Truck For The Job
- Simple to Drive and Operate
- Easy Entry & Exit
- Large Operation Space
- Suspension Seat(option)
- Excellent Visibility
- Tilttable Steering Column
- Multifunctional LCD Display Meter
- Smoke Purification Device (Option)
- Wide View Cabin (Option)

Safety Operation

- Integral Heavy Duty Chassis
- System of Active Stability
- Most Intelligent Buffering System
- Parking Brake Warning Buzzer (Option)
- Operator Presense Security System (Option)

Optional Attachments

- Integrative Side Shifter
- Fork Positioner
- Fork Clamp
- Rotating Fork
- Bale Clamp

High Efficiency & Productivity

- Precisely Steering
- Powerful Engine
- Higher Acceleration Ability
- Powerful Hydraulic Transmission
- Faster Lifting & Lowering Speed
- Easy Operation Shift Lever
- Snorkel Air Intake

Superior & Economic Serviceability

- Easy Service and Maintenance Design
- Central Integrated Electric System
- Reliable Hydraulic System
- Strong Engine Hood
- Easy-open Radiator Cover

Reliable RY Forklift

- Reliable Forklift Quality
- Perfect After Sales Service System
- Comprehensive Parts Supply System
- Experienced Technical Support Team

Invisible Value

- LED Combination Lamp & Reverse Warning Light
- Excellent Heat-releasing Performance
- Integral Overhead Guard
- Stronger Wide View Mast



COMFORT & ERGONOMICS

The Right Truck For The Job

"RY 5-10Ton forklift trucks offer load capacities ranging from 5 to 10 tonnes, delivering the right model for each specific customer requirement. A wide range of features and options allows you to choose the truck that meets your specific needs and keeps your business performing at the highest possible level."

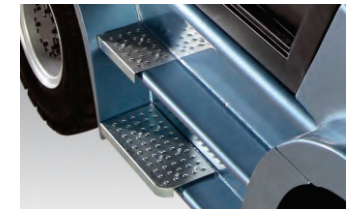


Simple to Drive & Operate

"Driver productivity has been increased by studying operational needs. Even occasional drivers will find RY heavy duty trucks simple and intuitive to drive. An inching pedal allows even more driving control when approaching racks or picking pallets."

Easy Entry & Exit

"To produce heavy duty forklifts, RY looked at the whole driver-forklift relationship and then designed a heavy-duty truck that provides excellent driver ergonomics. You'll notice the difference before you even start the smooth RY engine. First, a wide step provides easy entry and exit. This is especially welcome in applications"



Excellent Visibility

- * Newly designed backrest and fork carriage with excelled fork tip visibility
- * Super Wide view mast with hidden hose design dramatically improves the front and lifting visibility, ensuring the safety of operation.



Large Operation Space



"Once you are on board, ample floor space and a thick moulded rubber floor mat provide a soft, comfortable place for your feet." "With the spacious driving space and relaxing foot driving, you will enjoy each driving minute."

Suspension Seat (option)



With optional suspension seat, the operator can experience great driving comfort by adjusting the seat backrest, the seat position, and the suspension grade according to different driver's height and weight. It dramatically reduces the operator's fatigue.

COMFORT & ERGONOMICS

Multifunctional LCD Display Meter



All controls and pedals are laid out for optimized ease of use. The layout of meters and gauges in an integrated combination panel makes it simple to monitor functioning at a glance, and the greater variety of meters used assures a better awareness of vehicle status at all times. "

Tiltable Steering Column



"When operating the truck, full hydraulic power steering provides effortless manoeuvring, even with heavy loads. The tiltable steering column features a steering knob for a comfortable, relaxed grip on the wheel"

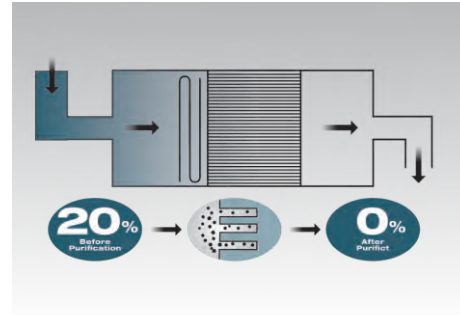


Wide View Cabin (Option)

With full glass cabin and less plastic design, the operator can wide view all surroundings easily. This can help to reduce the operator's eye fatigue and also increase the safety of driving.

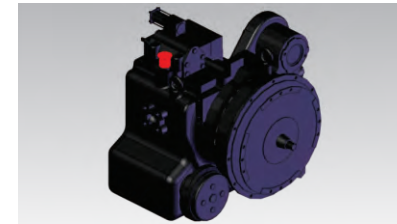
Smoke Purification Device (Option)

With optional smoke purification device, it can dramatically purify the harmful gas into harmless carbon dioxide and water vapor, reduce a lot harm to human beings and environment.



Powerful Hydraulic Transmission

The Powerful Hydraulic Transmission converts powerful acceleration response.



Easy Operation Shift Lever

"The shift lever can be operated with just the finger tips,boosting handling efficiency while reducing operator fatigue."



Snorkel Air Intake

"To ensure a supply of clean air for the engine, a snorkel air intake is located on the counter weight.

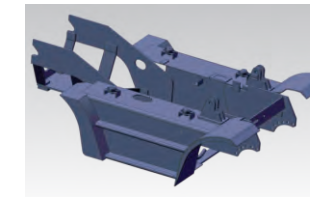
SAFETY OPERATION

Mast Intelligent Buffering System

With intelligently declining buffer sensor on the two ends of the cylinder,the falling speed of the fork slows down automatically before it is 10cm from the ground, and the lifting speed to the top also slows down to avoid quick hit on the top, it super increases the safety of the goods and forklifts.



Integral Heavy Duty Chassis



An integral heavy duty chassis provides the driver with 20% more protection from falling loads.

Parking Brake Warning Buzzer (Option)



An automatic-style parking brake ensures of the convenience and safety. The warning buzzer will sound when the operator leaves the seat without parking the forklift.

HIGH EFFICIENCY & PRODUCTIVITY



Faster Lifting & Lowering Speed

Considering safety and energy-saving, RY Forklift attaches close attention to the development of hydraulic system, and increases lifting and lowering speed to ensure the productivity.

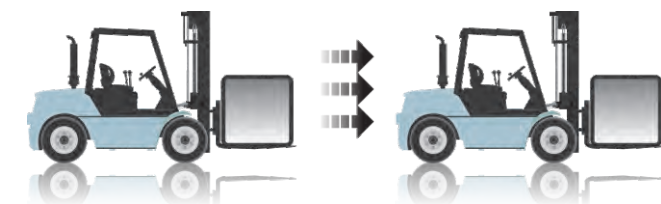
Precisely Steering

The new axle provides wider steering angles to 85 degree to present a superior smart turning radius of RY Forklift, and plus the compact design, RY forklift can navigate the narrow and congested space.

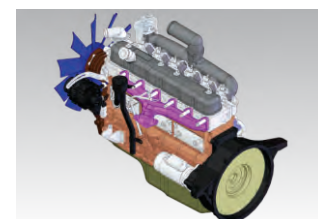


Higher Acceleration Ability

20% higher acceleration ability,surprisingly shortens the working time at the same working distance, dramatically improves the working efficiency.



Powerful Engine



"The powerful 6-cylinder diesel engine is designed to comply with the emission regulation EN 97/68 stage IIIa.

Operator Presense Security System (Option)



With operator presense security system, RY forklift can have the forklift stop moving forward when the operator leaves the seat which ensuring the safety of goods and people around at emergency situation.

System of Active Stability

With the SAS, the wheel and tyre can be provided from swering up and down according to the working condition to stay stability. This provides the driver with a safer and more comfortable heavy duty forklift truck.



SUPERIOR & ECONOMIC SERVICEABILITY



Easy Service & Maintenance Design

The bolt mounted foot step cover can be easily taken off to do inspection and service.

Central Integrated Electric System

The central integrated design of the electric system enables the service to be easier and faster.



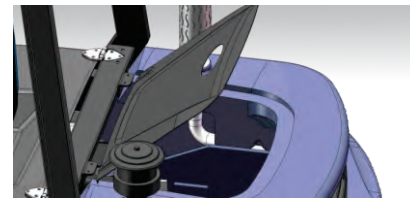
Reliable Hydraulic System



With reliable hydraulic design and components, the hydraulic components are with high durability which can lower the cost in repair and replacement.

Easy-open Radiator Cover

"A sealed design is used for the radiator cover as well, and easy access is assured by the handy damper, which makes opening and closing the cover a snap"



Strong Engine Hood

"The engine hood is completely sealed for maximum comfort, and opens fully to a wide 85°. A hood damper reduces the effort needed to open the hood."



OPTIONAL ATTACHMENTS

Integrative Side Shifter

The integrative side shifter is integrated in the fork carriage. With this attachment, the fork carriage can move from left to right to precise the lifting position. Compared to the hanging-on side shifter, the load center is not with a big change, which assuring less load capacity loss at higher lifting height.

Fork Clamp

This attachment is effective for handling packed cotton or rough textile loads by grabbing them firmly from both sides.

Block Clamp

This attachment can pick up concrete blocks without using pallets.

Rotating Fork

Used together with the fork inserted container, this attachment is used for transporting items such as powder, fluids, etc. The fork is rotated in order to discharge the load.

Fork Positioner

With optional fork positioner in 5.0-7.0ton and standard in 9.0-10ton, the fork will be adjusted automatically by operating the third and fourth operation lever. It dramatically improves the working efficiency and reduces the fatigue.

Roll Clamp

Rolls of paper or cylindrical objects are safely and securely handled by this attachment. It is possible to rotate the clamped load through 360 degrees.

Bale Clamp

This attachment is recommended for handling packed pulp or raw cotton. The bale is efficiently held from both sides by the bale clamps.

INVISIBLE VALUE

Excellent Heat-releasing Performance

Considering to improve the heat-releasing performance, RY forklift engineers design the best location of the engine fan, radiator and muffler. Together with the increased heat-release space in the counter weight, RY forklift performs at an excellent heat-releasing situation.



Integral Overhead Guard



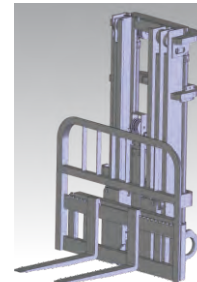
The front pillar, the rear pillar and the top pillar all welded and interated in the same structure, it entirely increase the strength of the whole overheard guard, which providing the operator with a safer overhead guard.

LED Combination Lamp & Reverse Warning Light

LED combination Lamp is equipped on top of the overhead guard and standard on each RY forklift. Compared to normal lamp of conventional forklifts, LED lamp is lighter and with more durability. The reverse warning light will flash when you switched on the forklift and also flash when you reverse the forklift. This can warn people around and provide you with a safe working place.



Stronger Wide View Mast



RY engineers design and provide you a stronger wide view mast by re-placing the position of the mast cover and tilt cylinder. By using a stronger mast corssbeam, the forklift will not easy get overshaped and stays great durability.

RELIABLE RY FORKLIFT

Reliable Forklift Quality



With the international testing standard, more reliable supplier chain, higher quality control to ensure the stability and quality of forklifts.

Experienced Technical Support Team



There are very experienced technical support team in RY forklift to provide professional training to clients from different country.

Comprehensive Parts Supply System

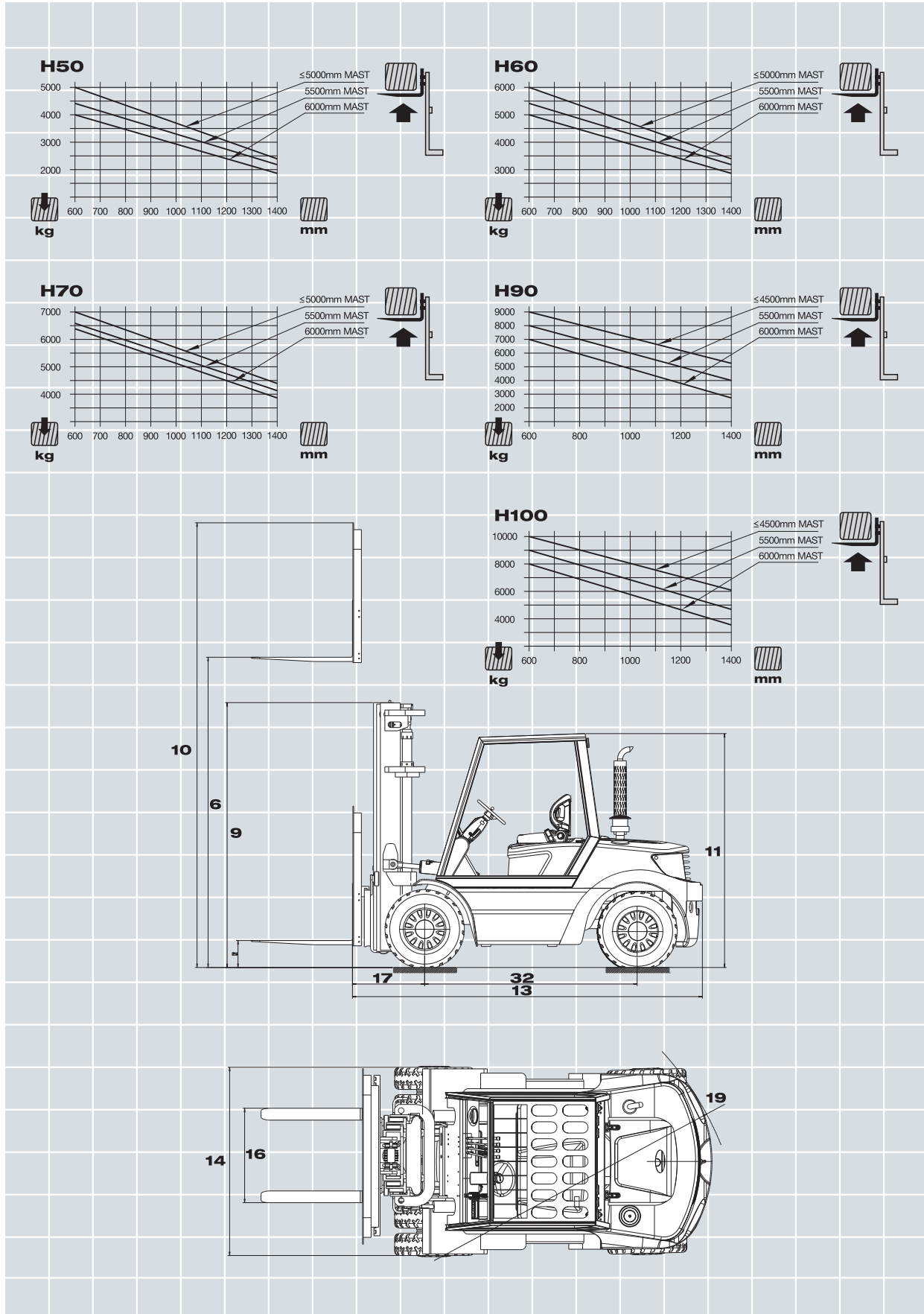


Parts supply system complied with multi-functional parts warehouse and I-NET system, RY forklift can provide clients with different type spare parts in time and accuracy.

Perfect After Sales Service System

With perfect after sales service and I-NET system, RY forklift can analyze each forklift issue easier, faster and more accurate.





GENERAL		RY	RY	RY	RY	RY	RY	RY	RY	RY	RY	RY	RY	RY
1	Manufacturer	RY	RY	RY	RY	RY	RY	RY	RY	RY	RY	RY	RY	RY
2	Model	H50C	H60C	H70C	H90C	H100C	H50A	H60A	H70A	H90A	H100A	H50B	H60B	H70B
3	Power Type	Diesel	Diesel	Diesel	Diesel	Diesel	Diesel	Diesel	Diesel	Diesel	Diesel	Diesel	Diesel	Diesel
4	Rated Load Capacity	kg	5000	6000	7000	9000	10000	5000	6000	7000	9000	10000	5000	6000
5	Load Centre	mm	600	600	600	600	600	600	600	600	600	600	600	600
CHARACTERISTIC & DIMENSION														
6	Rated Lift Height	mm	3000	3000	3000	3000	3000	3000	3000	3000	3000	3000	3000	3000
7	Free Lift Height	mm	205	205	210	130	130	205	205	210	130	130	205	205
8	Mast Tilt Angle (F/R, α°/β°)	Deg	6°/12°	6°/12°	6°/12°	6°/12°	6°/12°	6°/12°	6°/12°	6°/12°	6°/12°	6°/12°	6°/12°	6°/12°
9	Mast Lowered Height	mm	2500	2500	2625	2850	2850	2500	2500	2625	2850	2850	2500	2500
10	Mast Extended Height (With Backrest)	mm	4420	4420	4420	4015	4015	4420	4420	4420	4015	4015	4420	4420
11	Overhead Guard Height	mm	2485	2485	2485	2610	2610	2485	2485	2485	2610	2610	2485	2485
12	Ground Clearance (Bottom of Mast)	mm	200	200	200	250	250	200	200	200	250	250	200	200
13	Length to Face of Fork (Without Fork)	mm	3530	3530	3620	4300	4300	3530	3530	3620	4300	4300	3530	3530
14	Overall Width	mm	1995	1995	1995	2165	2165	1995	1995	1995	2165	2165	1995	1995
15	Fork Size (LxWxT)	mm	1220x150x55	1220x150x60	1220x150x65	1220x175x80	1220x150x55	1220x150x60	1220x150x65	1220x175x80	1220x150x55	1220x150x60	1220x150x65	1220x150x65
16	Fork Overhang (Wheel Center to Fork Face)	mm	585	585	595	710	710	585	585	595	710	710	585	595
17	Rear Overhang	mm	670	670	750	790	790	670	670	750	790	790	670	670
18	Turning Radius (Outside)	mm	3290	3290	3370	3920	3920	3290	3290	3370	3920	3920	3280	3280
19	"Min.Right Angle Stacking Aisle Width Add Load Length and Clearance"	mm	5215	5215	5315	5845	5915	5215	5215	5315	5845	5915	5215	5315
PERFORMANCE														
20	Travel Speed (No Load)	km/h	28	28	28	30	30	28	28	28	30	30	27	26
21	Lifting Speed (Full Load)	mm/sec	400	400	330	310	310	500	500	460	310	310	400	400
22	Lowering Speed (Full Load)	mm/sec	500	500	500	500	500	500	500	500	500	500	500	500
23	Max.Drawbar Pull (Full Load)	KN	53	53	52	57	57	54	54	53	57	57	45	43
24	Max.Gradeability (Full Load)	%	32	27	24	≤20	≤20	35	32	29	≤20	≤20	20	20
25	Service Brake (Operation/Control)		Foot/Powershift			Foot/Powershift			Foot/Powershift					
26	Parking Brake (Operation/Control)		Hand/Mechanical			Hand/Mechanical			Hand/Mechanical					
CHASSIS														
27	Tyre (Front x 4)	mm	8.25-15-14PR		9.00-20-14PR		8.25-15-14PR		9.00-20-14PR		8.25-15-14PR			
28	Tyre (Rear x 2)	mm	8.25-15-14PR		9.00-20-14PR		8.25-15-14PR		9.00-20-14PR		8.25-15-14PR			
29	Front Tread	mm	1470	1470	1470	1600	1600	1470	1470	1470	1600	1600	1470	1470
30	Rear Tread	mm	1700	1700	1700	1700	1700	1700	1700	1700	1700	1700	1700	1700
31	Wheelbase	mm	2250	2250	2250	2800	2800	2250	2250	2250	2800	2800	2250	2250
WEIGHT														
32	Total Weight	kg	8000	8750	9450	12200	12900	7980	8640	9350	12200	12900	7980	8640
33	Front Axle Weight Distribution (Full Load)	kg	11600	13050	14600	19980	20610	11660	13050	14570	19980	20610	11660	13050
34	Rear Axle Weight Distribution (Full Load)	kg	1400	1700	1850	2220	2290	1320	1590	1780	2220	2290	1320	1590
35	Front Axle Weight Distribution (No Load)	kg	4050	3900	3850	5380	5660	4010	3880	3860	5380	5660	4010	3880
36	Rear Axle Weight Distribution (No Load)	kg	3950	4850	5600	6820	8240	3970	4760	5490	6820	8240	3970	4760
37	Battery	V/Ah	24/90	24/90	24/90	24/90	24/90	24/90	24/90	24/90	24/90	24/90	24/90	24/90
38	Engine Model		6102BG6			A-6BG1QC			S6S-T(Eu III)					
39	Engine Manufacturer		CHAOCHAI			ISUZU			MITSUBISHI					
40	Rated Output / r.p.m.	kw	80.9/2500			82/2000			63.9/2300					
41	Rated Torque / r.p.m.	N·m	353/1650			416/1400—1600			285/1700					
42	No.of Cylinder		6	6	6	6	6	6	6	6	6	6	6	6
43	Bore x Stroke	mm	102x118	102x118	102x118	102x118	102x118	105x125	105x125	105x125	105x125	105x125	94x120	94x120
44	Displacement	L	5.785	5.785	5.785	5.785	5.785	6.494	6.494	6.494	6.494	6.494	4.966	4.966
45	Fuel Tank Capacity	L	120	120	120	120	120	120	120	120	120	120	120	120
46	Transmission Type		Powershift			Powershift			Powershift					
47	Transmission Stage (FWD/RVS)		2/2	2/2	2/2	2/2	2/2	2/2	2/2	2/2	2/2	2/2	2/2	2/2
48	Operating Pressure (For Attachments)	Mpa	17	17	17	17	17	17	17	17	17	17	17	17

* All Rights Reserved by RY Forklift.